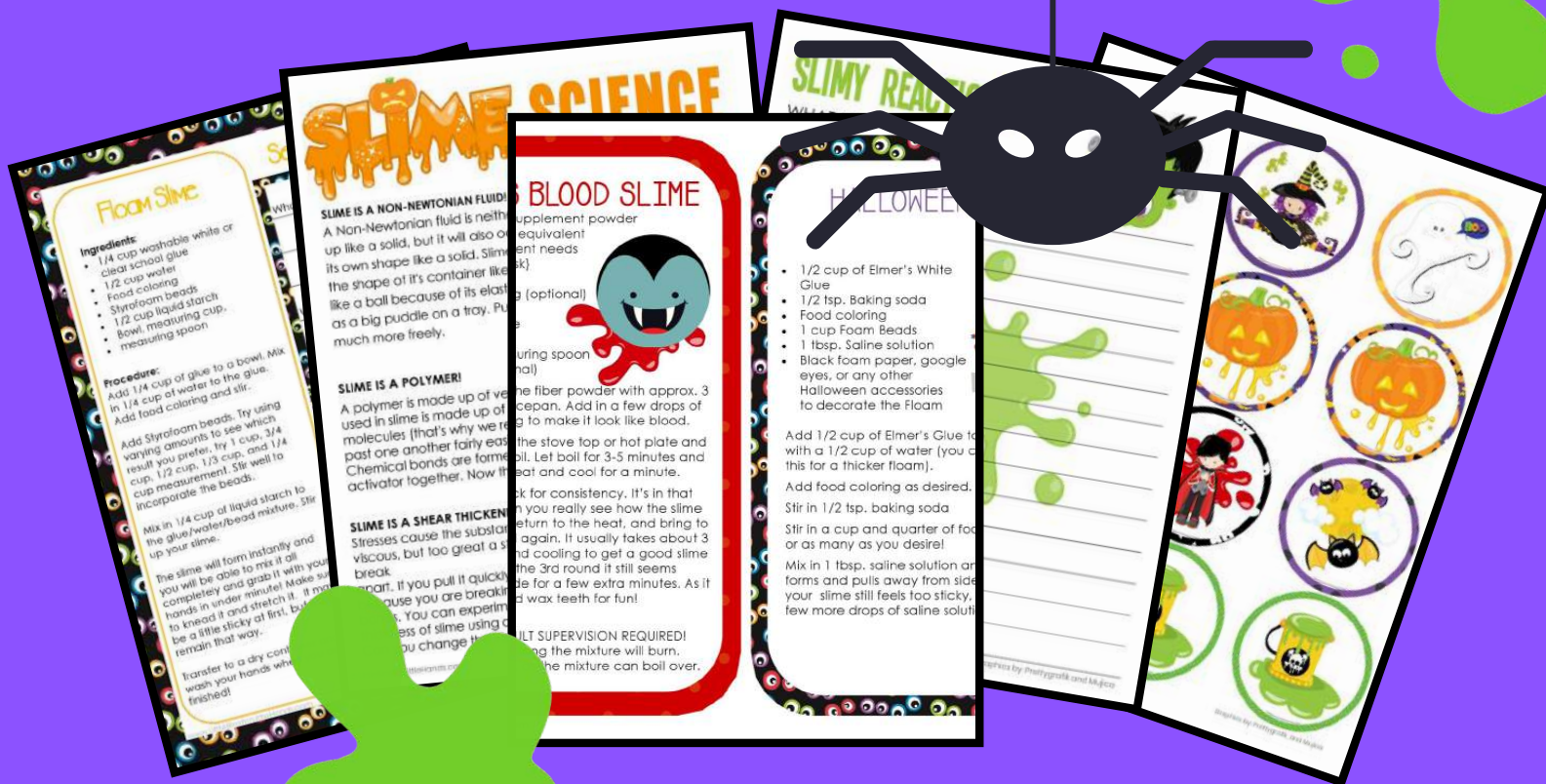


# HALLOWEEN SLIME PACK



## INTRODUCTION:

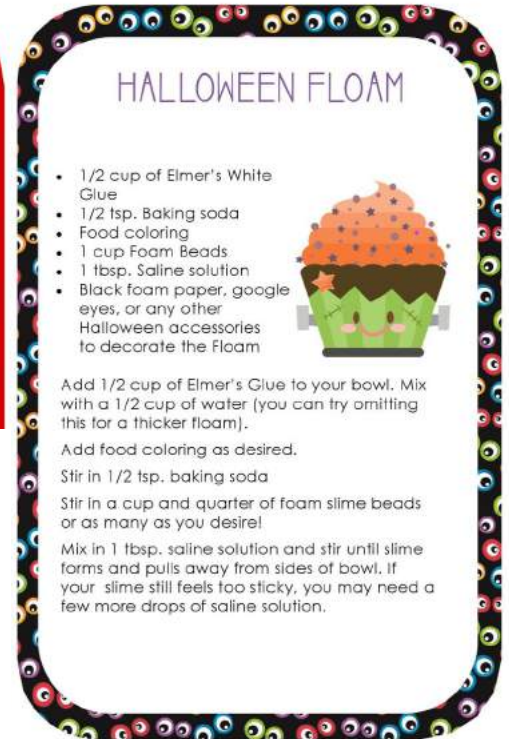
Welcome to your Halloween SLIME pack! I hope it sparks creativity and curiosity with all of your slime loving kids. Did you know slime is a wonderful classroom activity as well as a home or club activity for exploring chemistry?

This slime pack includes our easy to use slime recipes, slime science facts, slime math activities, slime literacy ideas, and more slimy fun! Plus. we have fun slime challenges to try that even feature an eruption!

Feel free to use the slime pack with just one slime maker or a whole group of slime makers. You may copy activities as many times as you like for your class, but please send your friends to grab their pack instead of sharing files.

~ Thank you!

Try our favorite Halloween theme slime recipes! Everything you need to know to make each slime is included.



www.LittleBinsforLittleHands.com

## What's Included:

- Bubbling Witch's Brew Slime
- Taste-Safe Peeps Slime
- Taste-Safe Vampire's Blood Slime
- Halloween Floam





# HALLOWEEN SLIME

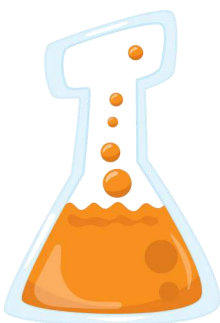
Fun Chemistry for Kids

**\*SLIME SAFETY:** Slime is a chemistry experiment and should be treated with respect. Do not substitute slime ingredients and do not change our recipes. If you have sensitive skin, consider wearing disposable gloves or trying a taste safe recipe instead.



## FLUFFY SLIME

- White Washable PVA School Glue
- Foaming Shaving Cream
- Baking Soda
- Food Coloring
- Saline Solution (contains both sodium borate and boric acid as ingredients)



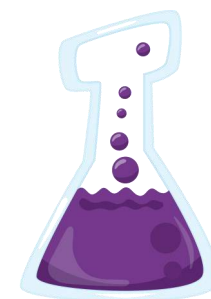
Measure 3-4 heaping cups of shaving cream into a bowl. Add food coloring.

Next, add a 1/2 cup of glue to the shaving cream and mix. Add 1/2 tsp. of baking soda and mix. Add 1 tablespoon of the saline solution to the mixture and start whipping.

Once mixed it can be pulled with hands.

## SALINE SLIME

- Clear or White PVA School Glue
- Saline Solution (contains both sodium borate and boric acid as ingredients)
- Baking Soda
- Water
- Bowl, Spoon, Measuring Cups & Spoons



Mix 1/2 cup glue and 1/2 cup of water in a bowl. Add 1/2 tsp. of baking soda and stir.

Add food coloring and mix-ins if desired.

Add 1 Tbsp. of saline solution. Stir vigorously until mixture forms a slimy ball.

Coat hands with a few drops of saline, and knead slime to desired consistency.



## BORAX SLIME

- 1/4 tsp. Borax Powder
- 1/2 cup Elmer's Clear or White Washable PVA School Glue
- 1 cup of Water divided to 2 1/2 cups
- Food Coloring, Glitter, Confetti
- Bowl, Spoon, Measuring Cups



Dissolve 1/4 teaspoon of borax powder into 1/2 cup of warm water in one of the three bowls. Mix this thoroughly.

In the second bowl measure out about 1/2 cup of clear glue and mix with 1/2 cup of water until well mixed. Pour borax/water mixture into glue/water mixture and stir. You will see it come together right away.

It will seem stringy and clumpy. Remove from bowl. Spend a few minutes kneading the mixture together. You may have left over borax solution.

Store in clean container with cover.

## GLITTER GLUE SLIME

- 1 Bottle of Elmer's Washable Glitter Glue (any color)
- 1/8-1/4 cup of Liquid Starch



Start by adding your glitter glue to a bowl and grab a mixing utensil.

Start adding up to 1/8 cup of liquid starch and stir well until slime consistency forms. The starch acts as the slime activator. For a single batch of slime 1/8 to 1/4 cup does the trick.

If your slime still feels too sticky, you need more starch. Be careful, and add just a little at a time until you get the consistency you want. If you add too much liquid starch your slime will become stiff and rubbery. You can always add, but you can't take away.

**SLIME TIP:** Liquid starch slime may appear stringy at first but give it a few minutes.



## BUBBLING HALLOWEEN SLIME

- 1/2 cup Elmer's Washable White School Glue
- 1 tbs. Saline Solution
- 2 tbs. Baking Soda
- 1/4 cup White Vinegar
- Food Coloring (green or any Halloween color)
- Small Cauldron or Container (for mixing slime)
- Small Cup (for mixing vinegar and saline)
- Cookie or Craft Tray
- Creepy Crawlies



Start by combining the glue and baking soda in your chosen container. Add in your creepy crawlies. Add in your green food coloring. Or, orange and purple would be fun too!

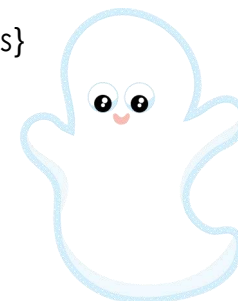
In the small cup, mix together the vinegar and saline solution.

Pour the vinegar/saline mixture into the glue mixture and start stirring. You'll notice the mixture starts to bubble and even erupt!

Continue to stir until the eruption is complete. You will notice it gets harder and harder to stir. That's because you are mixing your slime. Now you can pull it out and knead it a bit.

## PEEPS HALLOWEEN SLIME

- Peeps {sleeves of 5 if you are using ghost or 10 for the pumpkins}
- Cornstarch
- Vegetable Oil
- Tablespoon
- Microwave Safe Bowl and Spoon
- Potholder



Place your peeps into a microwave safe bowl.

Add one tablespoon of vegetable oil to them. This helps with the stickiness and the stretchiness of your slime.

**ADULTS:** Place the bowl in the microwave for approximately 30 seconds. Oven watts vary so you may need to adjust time up or down depending on the results of your first batch.

Remove the bowl carefully from the microwave. Make sure to take a look at them and make some observations about what happened! The bowl will be hot and the Peeps will be even hotter.

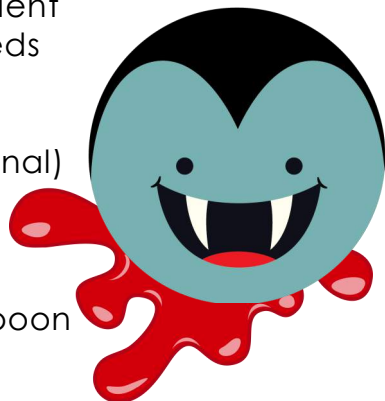
Add the cornstarch to the bowl in small amounts starting with a tablespoon.

Let the slime cool enough to handle. You may need to add up to 3 tablespoons of cornstarch to get a good consistency.

**Slime Tip: Adults,** make sure the slime is cool enough for kids to touch. While this is an edible slime, it's best to keep extra Peeps on-hand for snacking!

# VAMPIRE'S BLOOD SLIME

- Metamucil fiber supplement powder or generic brand equivalent {the main ingredient needs to be psyllium husk}
- Water
- Red food coloring (optional)
- Small saucepan
- Stove or hot plate
- 1 cup measure
- 1 teaspoon measuring spoon
- Wax teeth (optional)



Mix 3 teaspoons of the fiber powder with approx. 3 cups of water in saucepan. Add in a few drops of the red food coloring to make it look like blood.

Place saucepan on the stove top or hot plate and bring mixture to a boil. Let boil for 3-5 minutes and then remove from heat and cool for a minute.

Use a spoon to check for consistency. It's in that cooling minute when you really see how the slime consistency forms. Return to the heat, and bring to a boil. Then, let cool again. It usually takes about 3 rounds of heating and cooling to get a good slime consistency. If after the 3rd round it still seems loose, set it to the side for a few extra minutes. As it cools it thickens. Add wax teeth for fun!

## **Slime Notes:** ADULT SUPERVISION REQUIRED!

If you cook too long the mixture will burn.  
Stay by your stove, as the mixture can boil over.

# HALLOWEEN FLOAM

- 1/2 cup of Elmer's White Glue
- 1/2 tsp. Baking soda
- Food coloring
- 1 cup Foam Beads
- 1 tbsp. Saline solution
- Black foam paper, google eyes, or any other Halloween accessories to decorate the Floam



Add 1/2 cup of Elmer's Glue to your bowl. Mix with a 1/2 cup of water (you can try omitting this for a thicker floam).

Add food coloring as desired.

Stir in 1/2 tsp. baking soda

Stir in a cup and quarter of foam slime beads or as many as you desire!

Mix in 1 tbsp. saline solution and stir until slime forms and pulls away from sides of bowl. If your slime still feels too sticky, you may need a few more drops of saline solution.

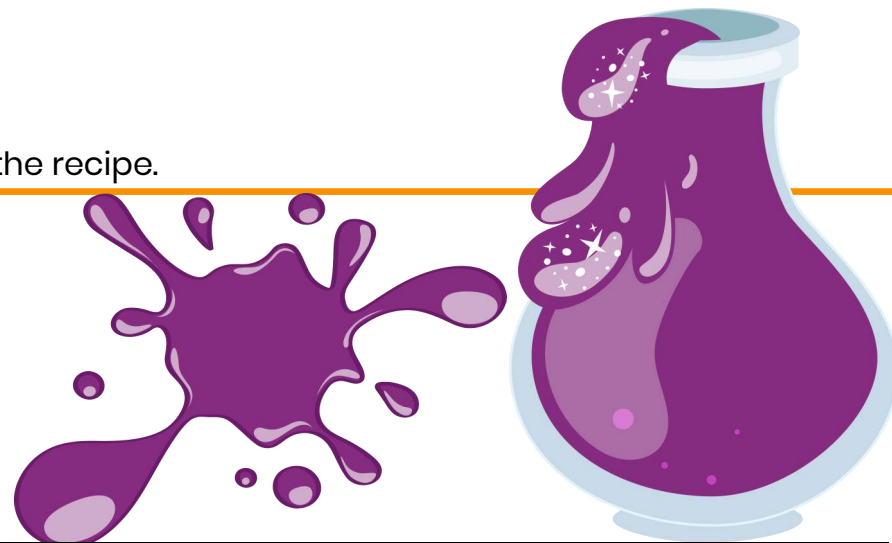


# SALINE GLITTER SLIME

Calculate the slime ingredients if you were to alter the amounts in the recipe.

## Saline Glitter Slime Recipe Ingredients

- 1/2 cup clear or white glue
- 1 T. Saline solution
- 1/2 cup water
- 1/4 tsp. baking soda



## Double the Ingredients

$$1/2 \text{ cup} \times 2 = \underline{\hspace{2cm}} \text{ cup}$$

$$1 \text{ Tablespoon} \times 2 = \underline{\hspace{2cm}} \text{ cup}$$

$$1/2 \text{ cup} \times 2 = \underline{\hspace{2cm}} \text{ cup}$$

$$1/4 \text{ teaspoon} \times 2 = \underline{\hspace{2cm}} \text{ teaspoon}$$

## Triple the Ingredients

$$1/2 \text{ cup} \times 3 = \underline{\hspace{2cm}} \text{ cups}$$

$$1 \text{ Tablespoon} \times 3 = \underline{\hspace{2cm}} \text{ Tablespoons}$$

$$1/2 \text{ cup} \times 3 = \underline{\hspace{2cm}} \text{ cups}$$

$$1 \text{ teaspoon} \times 3 = \underline{\hspace{2cm}} \text{ teaspoons}$$

## Quadruple the Ingredients

$$1/2 \text{ cup} \times 4 = \underline{\hspace{2cm}} \text{ cups}$$

$$1 \text{ Tablespoon} \times 4 = \underline{\hspace{2cm}} \text{ Tablespoons}$$

$$1/2 \text{ cup} \times 4 = \underline{\hspace{2cm}} \text{ cups}$$

$$1 \text{ teaspoon} \times 4 = \underline{\hspace{2cm}} \text{ teaspoons}$$

## Half the Ingredients

$$1/2 \text{ cup} \div 2 = \underline{\hspace{2cm}} \text{ cup}$$

$$1 \text{ Tablespoon} \div 2 = \underline{\hspace{2cm}} \text{ Tablespoon}$$

$$1/2 \text{ cup} \div 2 = \underline{\hspace{2cm}} \text{ cup}$$

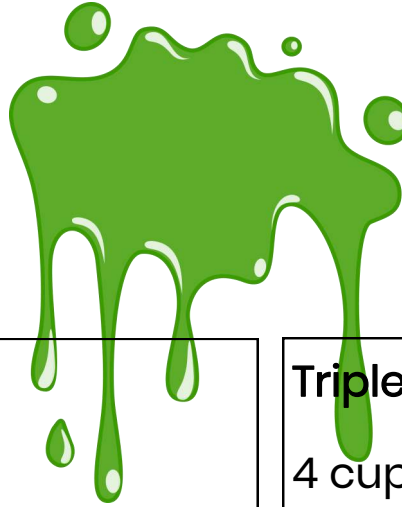
$$1 \text{ teaspoon} \div 2 = \underline{\hspace{2cm}} \text{ teaspoon}$$

# FLUFFY SLIME

Calculate the slime ingredients if you were to alter the amounts in the recipe.

## Fluffy Slime Recipe Ingredients

- 4 cups shaving cream
- 1/2 cup white pva school glue
- 1/2 tsp. baking soda
- 1 T. saline solution



## Double the Ingredients

4 cups =  $\times 2 =$  \_\_\_\_\_ cups

1/2 cup  $\times 2 =$  \_\_\_\_\_ cup

1/2 tsp.  $\times 2 =$  \_\_\_\_\_ teaspoon

1 Tablespoon  $\times 2 =$  \_\_\_\_\_ Tablespoons

## Triple the Ingredients

4 cups =  $\times 3 =$  \_\_\_\_\_ cups

1/2 cup  $\times 3 =$  \_\_\_\_\_ cup

1/2 tsp.  $\times 3 =$  \_\_\_\_\_ teaspoon

1 Tablespoon  $\times 3 =$  \_\_\_\_\_ Tablespoons

## Quadruple the Ingredients

4 cups =  $\times 4 =$  \_\_\_\_\_ cups

1/2 cup  $\times 4 =$  \_\_\_\_\_ cup

1/2 tsp.  $\times 4 =$  \_\_\_\_\_ teaspoon

1 Tablespoon  $\times 4 =$  \_\_\_\_\_ Tablespoons

## Half the Ingredients

4 cups  $\div 2 =$  \_\_\_\_\_ cups

1/2 cup  $\div 2 =$  \_\_\_\_\_ cup

1/2 tsp.  $\div 2 =$  \_\_\_\_\_ teaspoon

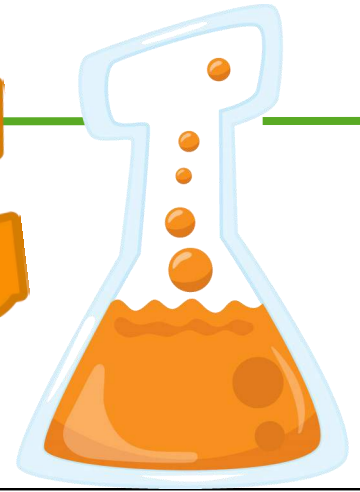
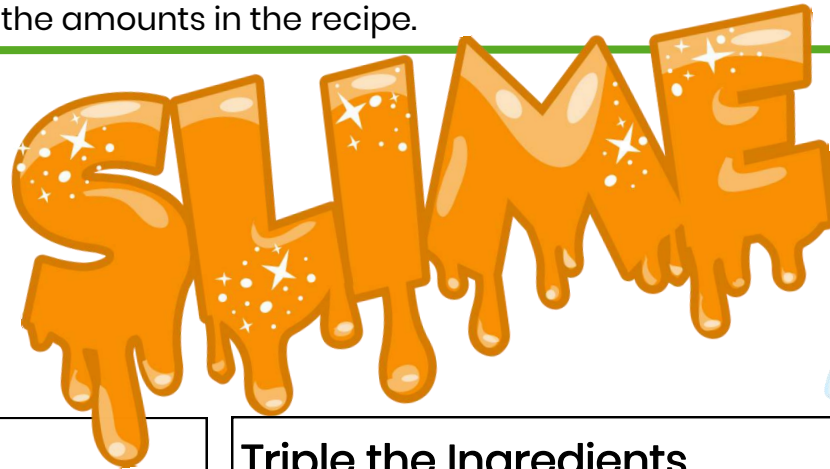
1 Tablespoon  $\div 2 =$  \_\_\_\_\_ Tablespoons

# LIQUID STARCH SLIME

Calculate the slime ingredients if you were to alter the amounts in the recipe.

## Liquid Starch Slime Recipe Ingredients

- 1/2 cup washable white glue
- 1/2 cup water
- 1/2 cup liquid starch



## Double the Ingredients

$$1/2 \text{ cup} \times 2 = \text{ \_\_\_\_\_\_ } \text{ cup}$$

$$1/2 \text{ cup} \times 2 = \text{ \_\_\_\_\_\_ } \text{ cup}$$

$$1/2 \text{ cup} \times 2 = \text{ \_\_\_\_\_\_ } \text{ cup}$$



## Triple the Ingredients

$$1/2 \text{ cup} \times 3 = \text{ \_\_\_\_\_\_ } \text{ cup}$$

$$1/2 \text{ cup} \times 3 = \text{ \_\_\_\_\_\_ } \text{ cups}$$

$$1/2 \text{ cup} \times 3 = \text{ \_\_\_\_\_\_ } \text{ cups}$$

## Quadruple the Ingredients

$$1/2 \text{ cup} \times 4 = \text{ \_\_\_\_\_\_ } \text{ cup}$$

$$1/2 \text{ cup} \times 4 = \text{ \_\_\_\_\_\_ } \text{ cups}$$

$$1/2 \text{ cup} \times 4 = \text{ \_\_\_\_\_\_ } \text{ cups}$$

## Half the Ingredients

$$1/2 \text{ cup} \div 2 = \text{ \_\_\_\_\_\_ } \text{ cup}$$

$$1/2 \text{ cup} \div 2 = \text{ \_\_\_\_\_\_ } \text{ cup}$$

$$1/2 \text{ cup} \div 2 = \text{ \_\_\_\_\_\_ } \text{ cup}$$





# MY SLIME EXPERIMENT

My Question

Possible Results  
(Hypothesis)

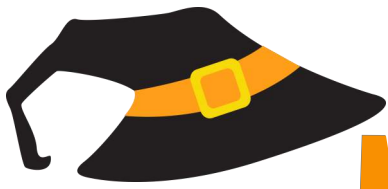
Supplies

Problem to Solve

My Process

My Observations





# MY SLIME EXPERIMENT

My Question

Possible Results  
(Hypothesis)

Supplies

Problem to Solve

My Process

My Observations



# SLIMY REACTIONS

WHAT HAPPENS IF YOU...



Pour it from cup

---

---

Hit it with your fist

---

---

Roll into a ball and bounce it

---

---

Hold it still in your hand for 30 seconds

---

---

Let it sit in container or bag for 24 hours

---

---





# SLIMY REACTIONS

WHAT HAPPENS IF YOU...

Twist it

---

---

Squeeze it

---

---

Bend it

---

---

Stretch/pull it slow

---

---

Stretch/pull it fast

---

---



# Slime Science Vocabulary

Force:

Gas:

Liquid:

Matter:

Mixture:

Molecule:

Newtonian Fluid:

Non-Newtonian Fluid:

Physical Properties:

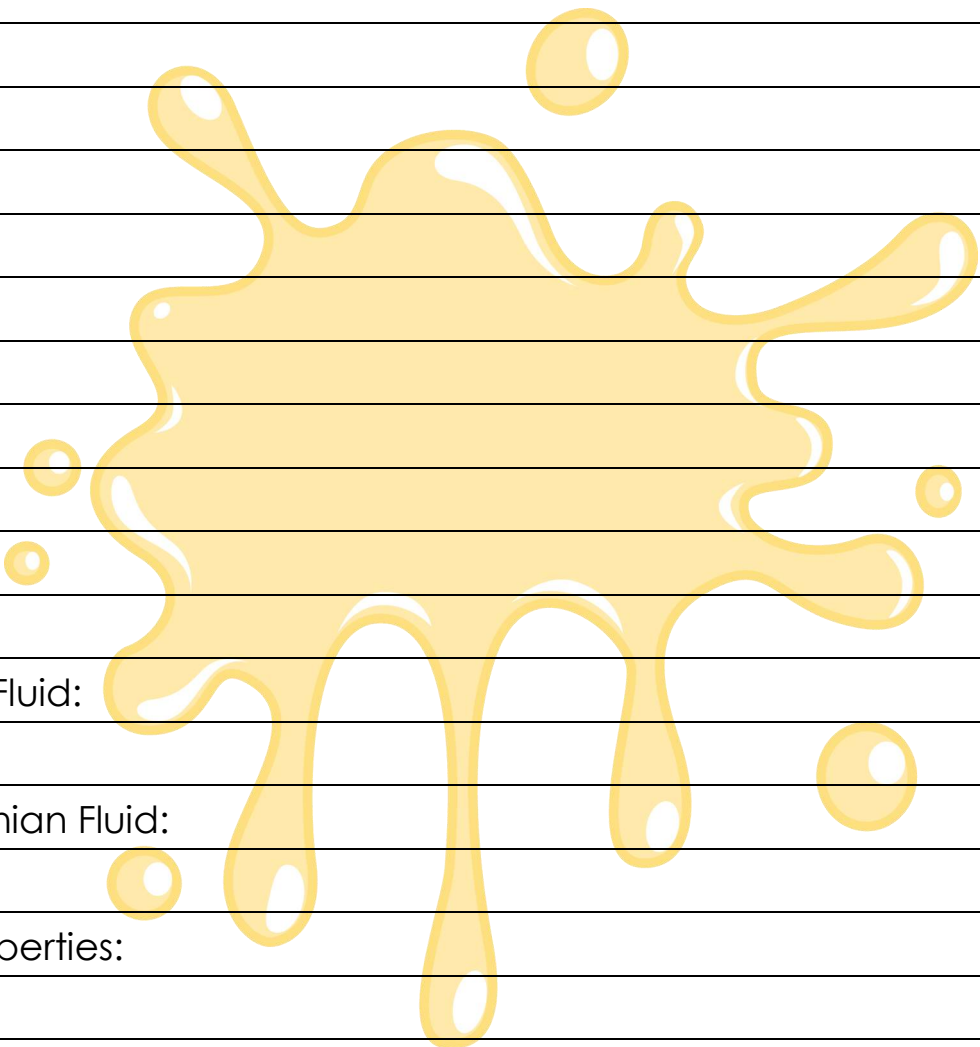
Polymer:

Shear thickening:

Shear Thinning:

Solid:

Viscosity:



# SLIME SCIENCE

## **SLIME IS A NON-NEWTONIAN FLUID!**

A Non-Newtonian fluid is neither a liquid or a solid. It can be picked up like a solid, but it will also ooze like a liquid. Slime does not have its own shape like a solid. Slime can also change its shape to take the shape of its container like a liquid. It can also be bounced like a ball because of its elasticity but also spread out as a big puddle on a tray. Pull slime slowly and it flows much more freely.



## **SLIME IS A POLYMER!**

A polymer is made up of very long chains of molecules. The glue used in slime is made up of long chains of polyvinyl acetate molecules (that's why we recommend PVA glue). These chains slide past one another fairly easily which keeps the glue flowing. Chemical bonds are formed when you mix the glue and slime activator together. Now the chains don't slide quite as easily!

## **SLIME IS A SHEAR THICKENING FLUID!**

Stresses cause the substance to become more viscous, but too great a stress will make the slime break

apart. If you pull it quickly, the slime will break off because you are breaking apart the chemical bonds. You can experiment with the viscosity or thickness of slime using our basic slime recipes. Can you change the viscosity of slime with the





# Saline Glitter Slime

## Ingredients:

1/2 cup clear or white glue  
1 T. Saline solution  
1/2 cup water  
1/4 to 1/2 tsp. baking soda  
Food coloring  
Glitter  
Bowl, measuring cups, spoon

## Procedure:

Mix, glue and water together in bowl. Add food coloring and glitter in a bowl as well until all combined.

Add the baking powder to the mix and stir well. This helps to firm up the slime. .

Add 1 T. saline solution that contains both, boric acid and sodium borate for the best slime activation.

Whip your slime together rapidly because you want it to combine well, but the activator will work quickly.

Use a bit of saline on your hands to reduce the amount of stickiness.

# Sensory Science

What does it feel like?

What do you see?

What do you smell?

What does it sound like?



**Do not taste this slime!**

# Fluffy Slime

## Ingredients:

- 3-4 cups shaving cream
- 1/2 cup white pva school glue
- 1/2 tsp. baking soda
- 1 T. saline solution
- bowl, spoon, measuring cups, measuring spoons

## Procedure:

Measure 3-4 heaping cups of shaving cream into a bowl. You can also experiment with using less shaving cream for different textures!

Add color! We used neon food coloring, but there are so many choices!

Next, add a 1/2 cup of glue to the shaving cream and mix.

Add 1/2 tsp. of baking soda and mix.

Add 1 tablespoon of the saline solution to the mixture and start whipping!

Once you get the mixture thoroughly whipped and incorporated, you can pull it out with your hands!

# Sensory Science

What does it feel like? \_\_\_\_\_

What do you see? \_\_\_\_\_



What do you smell? \_\_\_\_\_

What does it sound like? \_\_\_\_\_



**Do not taste this slime!**



# Floam Slime

## Ingredients:

- 1/4 cup washable white or clear school glue
- 1/2 cup water
- Food coloring
- Styrofoam beads
- 1/2 cup liquid starch
- Bowl, measuring cup, measuring spoon

## Procedure:

Add 1/4 cup of glue to a bowl. Mix in 1/4 cup of water to the glue. Add food coloring and stir.

Add Styrofoam beads. Try using varying amounts to see which result you prefer, try 1 cup, 3/4 cup, 1/2 cup, 1/3 cup, and 1/4 cup measurement. Stir well to incorporate the beads.

Mix in 1/4 cup of liquid starch to the glue/water/bead mixture. Stir up your slime.

The slime will form instantly and you will be able to mix it all completely and grab it with your hands in under minute! Make sure to knead it and stretch it. It may be a little sticky at first, but it won't remain that way.

Transfer to a dry container and wash your hands when you are finished!

# Sensory Science

What does it feel like?

What do you see?

What does it sound like?

What do you smell?

**Do not taste this slime.**

# HALLOWEEN SLIME CHALLENGES



## HALLOWEEN FAVORS

Want to give out slime as small Halloween party favors to guests?

Condiment size containers are perfect! 1 batch equals 5 mini cups!

Add an eyeball or a few spiders!

## HALLOWEEN THEMES

Use our slime recipe to create all these unique ideas!  
Click here to see all of our Halloween themes.

### OOZING PUMPKIN SLIME!

Carve a Jack O'Lantern and fill with slime till it oozes!

\*Create your own Halloween slime theme

### MAKE SPIDERY OOBLECK

Mix 1 cup of cornstarch and 1/2 cup of water and food coloring if desired. Add spiders!

\*Create your own zombie theme slime

### WITCH'S BREW FLUFFY SLIME

Mix it up in a cauldron and add creepy crawlies!

\*Create your own spider web theme slime

### MAKE VAMPIRE SLIME

Make blood red slime and add plastic vampire teeth!

\*Create your own skeleton theme slime

### MAKE FLOAM GHOSTS AND PUMPKINS

Add cup of foam beads to slime. Cut out foam shapes for faces.  
Click here to see the video!

\*Create your own glow in the dark slime

### MAKE CANDY CORN FLUFFY SLIME

Mix up a fluffy slime in white, orange, and yellow.

\*Create your own bat theme slime

### MAKE EDIBLE PEEPS SLIME

Want to make taste-safe slime with Peeps! Click here to see the video and get the recipe.

**CLICK HERE FOR RECOMMENDED SLIME SUPPLIES**



# BASIC SLIME RECIPE

## EASY SLIME RECIPE

This is an awesome, versatile recipe for any of your favorite slimy Halloween themes. It also handles mix-ins very well!

For extra stretchy slime, we suggest not putting in too much saline until you have spent some time kneading your slime.

## SALINE SOLUTION SLIME RECIPE

Mix 1/2 cup of white or clear washable school glue (Elmers is our favorite) with 1/2 cup of water.

Add a 1/2 tsp of baking soda

Add food coloring and mix-ins like confetti or foam beads

Stir in 1 tbsp of saline solution until slime forms. We recommend Equate or Target brand saline solutions (not contact solutions)

Knead slime to desired consistency. Squirt a few drops of saline onto hands to help reduce stickiness. Sticky slime is great for mix-ins like foam beads.

## SLIME MAKING TIPS

For fluffy slime, omit water. Replace with 2-3 cups of shaving cream.

For butter slime, knead in 2 oz of soft clay after slime is made.

For glow in the dark slime, try Elmer's Glow Glue!

For foam slime add in 1 cup of beads when mixing or dip slime into beads

## MIX-IN IDEAS

Glitter

Sequins

Halloween Confetti

Small Baking Pumpkin

Google Eyes/Eyeballs

Foam Beads

Soft Clay (Butter Slime)

Glitter Glue

Creepy Crawlies

Vampire Teeth

## SUPPLIES

Washable School Glue

Baking Soda

Saline Solution

Water

Foam Shaving Cream

Food Coloring

Cornstarch

Condiment Containers (favors)

**CLICK HERE FOR MORE GREAT SLIME RECIPE IDEAS**

