

# LINE

Line is an element of art.

A. These are some line types. Look at them and then circle the correct option.



Horizontal line

Vertical line



Horizontal line

Diagonal line



Horizontal line

Vertical line



Dotted line

Dashed line



Dotted line

Dashed line



Wavy line

Straight line



Zig Zag line

Wavy line



Curly line

Scallop line



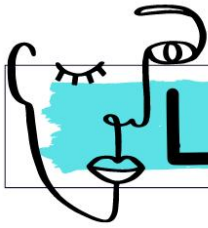
Curly line

Dashed line



Wavy line

Spiral line



# LINE

Line is an element of art.

B. Read, think and draw.



A LONG LINE



A THICK LINE



A STRAIGHT LINE



A SHORT LINE

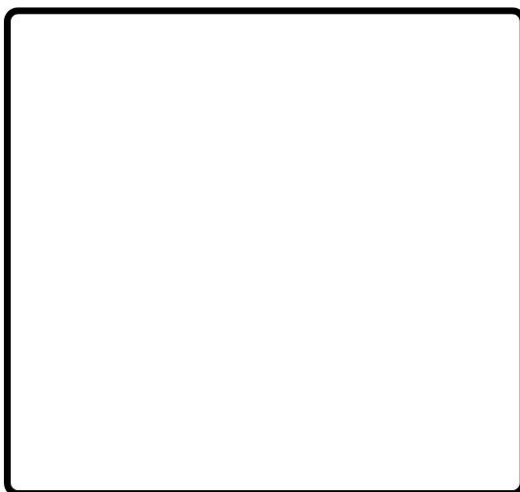


A THIN LINE

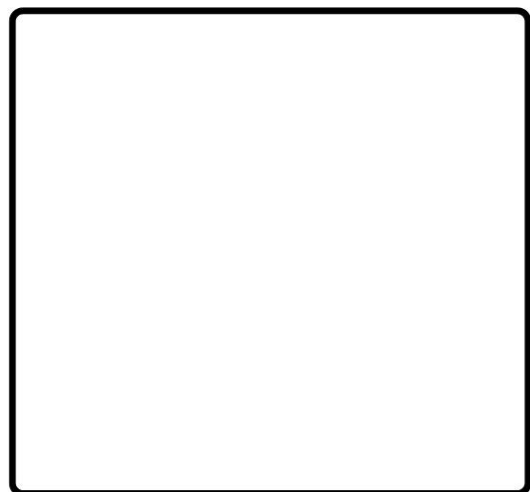


A WAVY LINE

C. Use two line types from activities A and B, to draw things. Then, describe.



I used a \_\_\_\_\_  
to draw a \_\_\_\_\_



I used a \_\_\_\_\_  
to draw a \_\_\_\_\_